



HIGH QUALITY  
OFFICE SPACE  
AT THE HEART  
OF BIRMINGHAM  
CENTRAL  
BUSINESS DISTRICT

# High quality office space in Birmingham City Centre

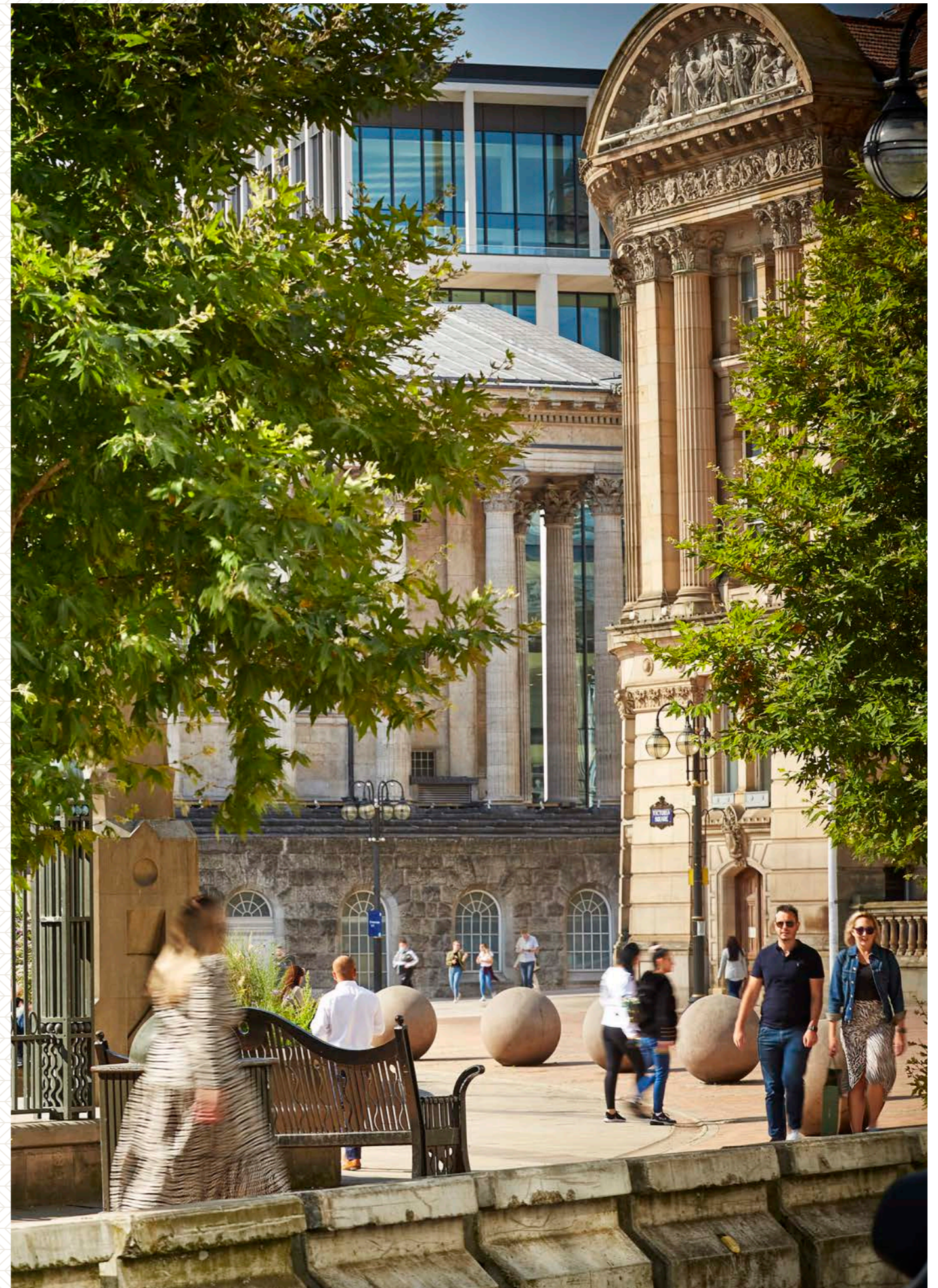
New Oxford House enjoys an excellent location at the heart of the Birmingham central business district, with New Street, Corporation Street and Colmore Row all within a short walking distance. The building is ideally located to benefit from a City Centre location with Birmingham's vast array of retail, dining and cultural entertainment opportunities close by.



Arranged over five floors, the prestige and quality of New Oxford House is evident throughout the property.

New Oxford House also includes a Michelin star Restaurant, Adam's on the ground floor of the building.

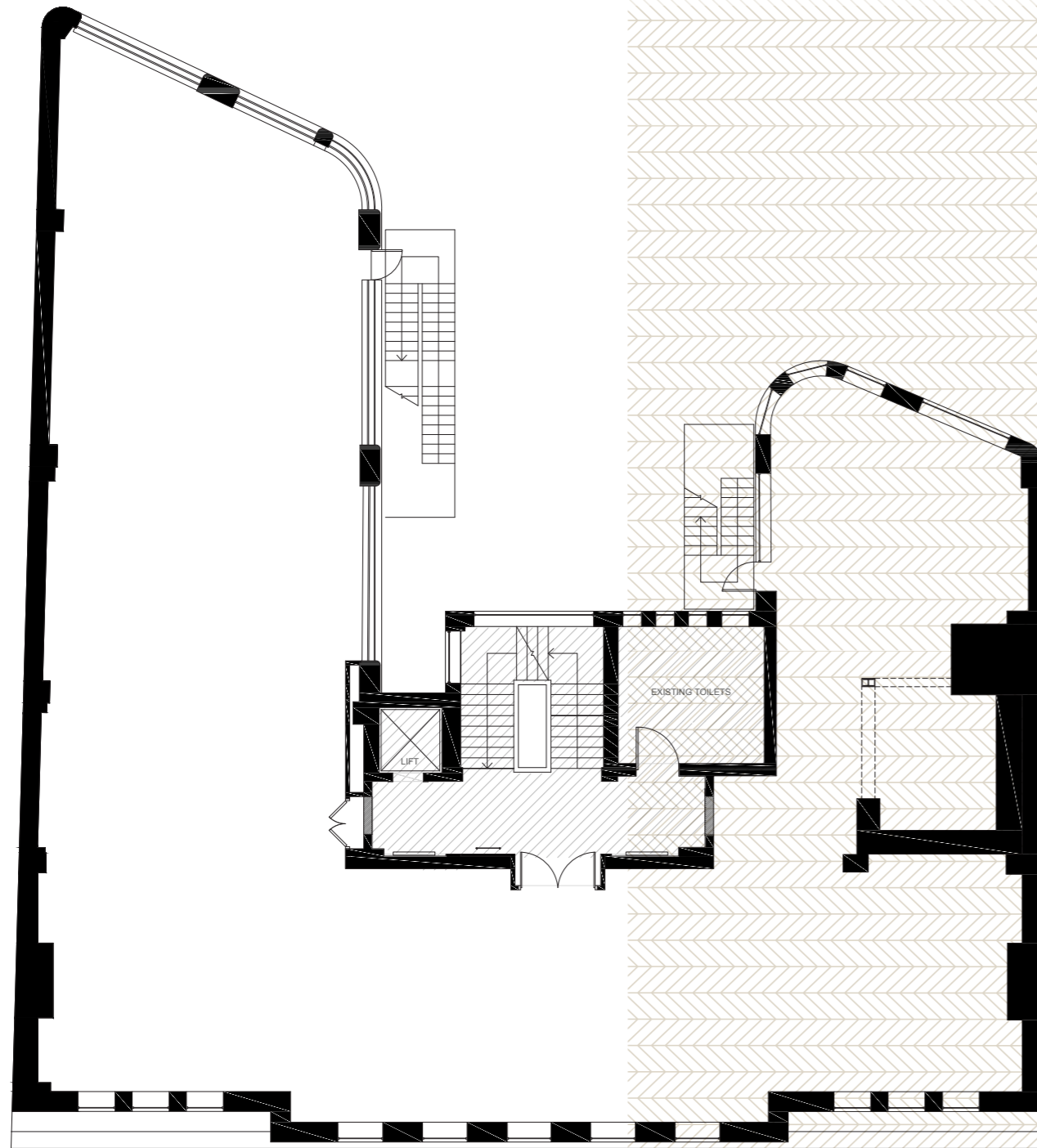
With impressive common areas and access directly off Waterloo Street the building is ideally placed for client fronting operations.



# First floor

3,551 SQ FT

INDICATIVE FLOORPLAN



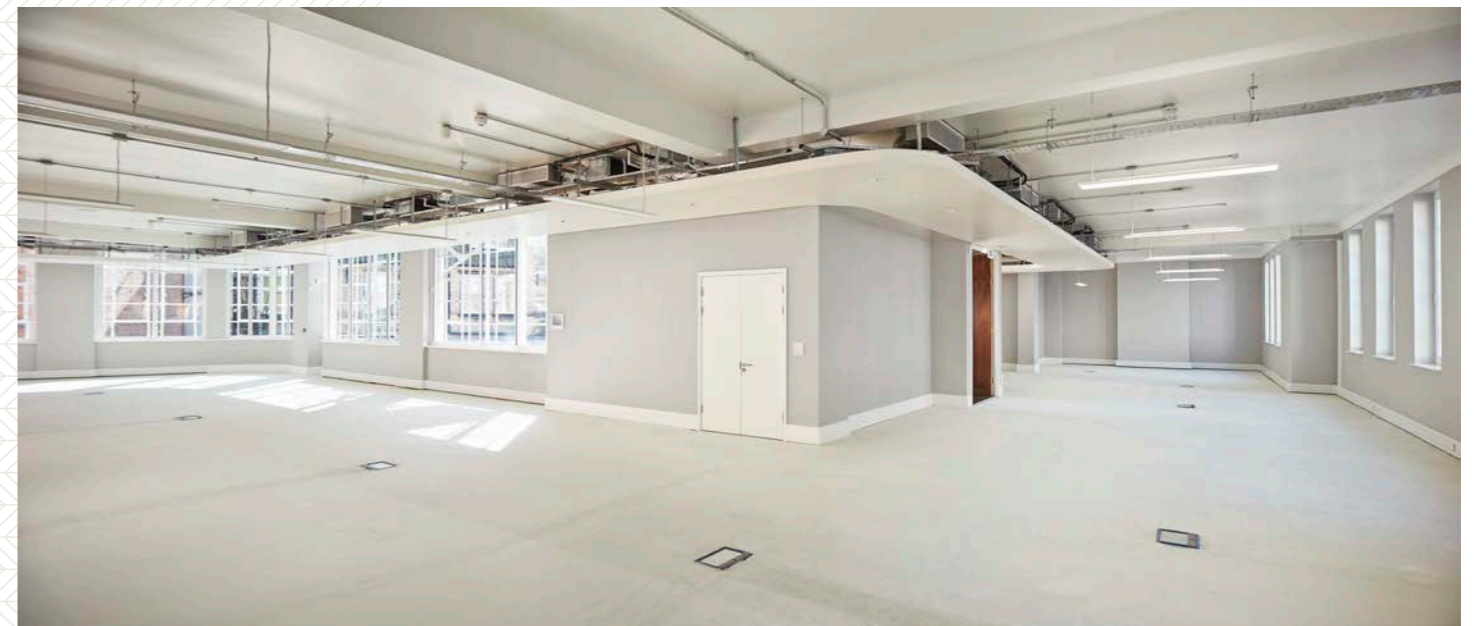
## FEATURES & SPECIFICATION

The suite has undergone an extensive refurbishment which includes the following:

- New VRF air conditioning system
- Perimeter / under floor trunking
- Pendant LED lighting
- Newly decorated throughout
- EPC certificate available upon request

The building also includes:

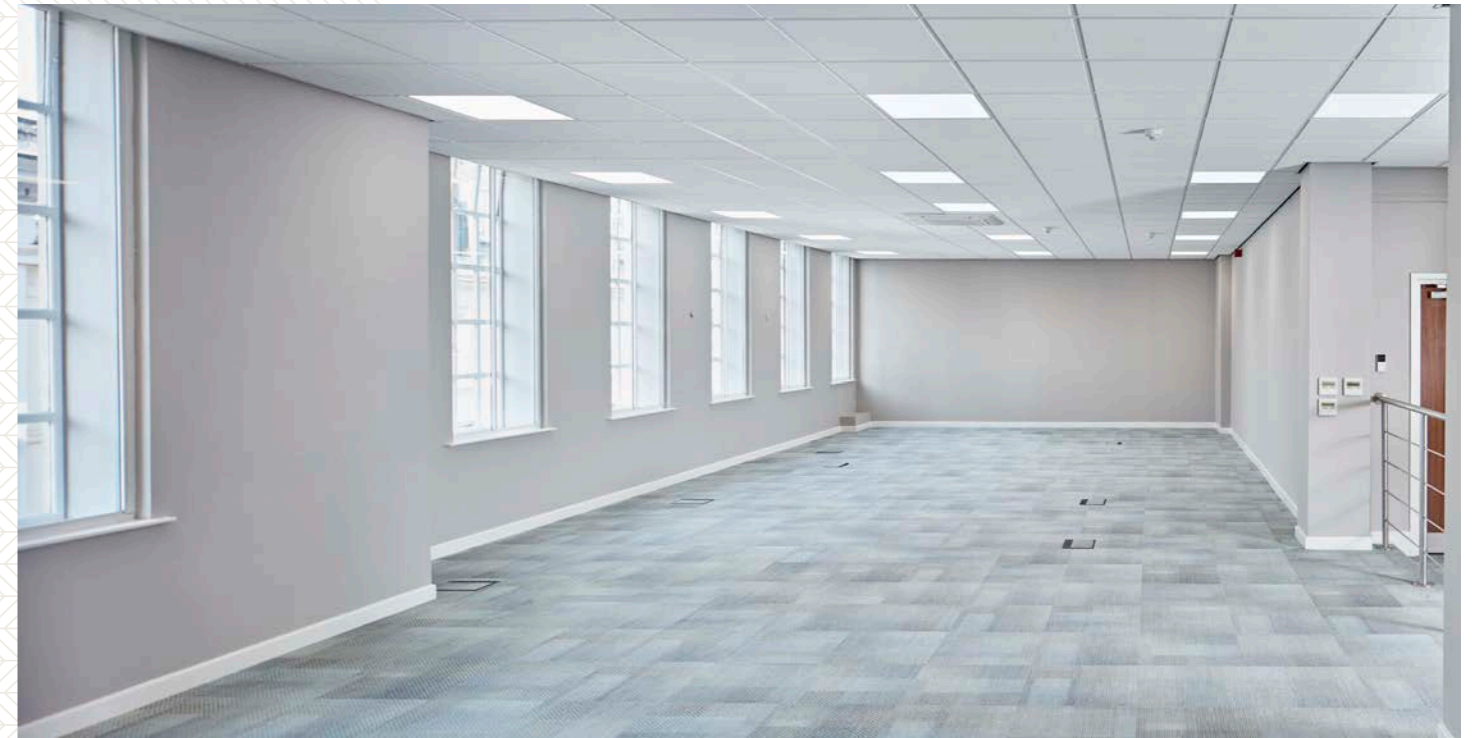
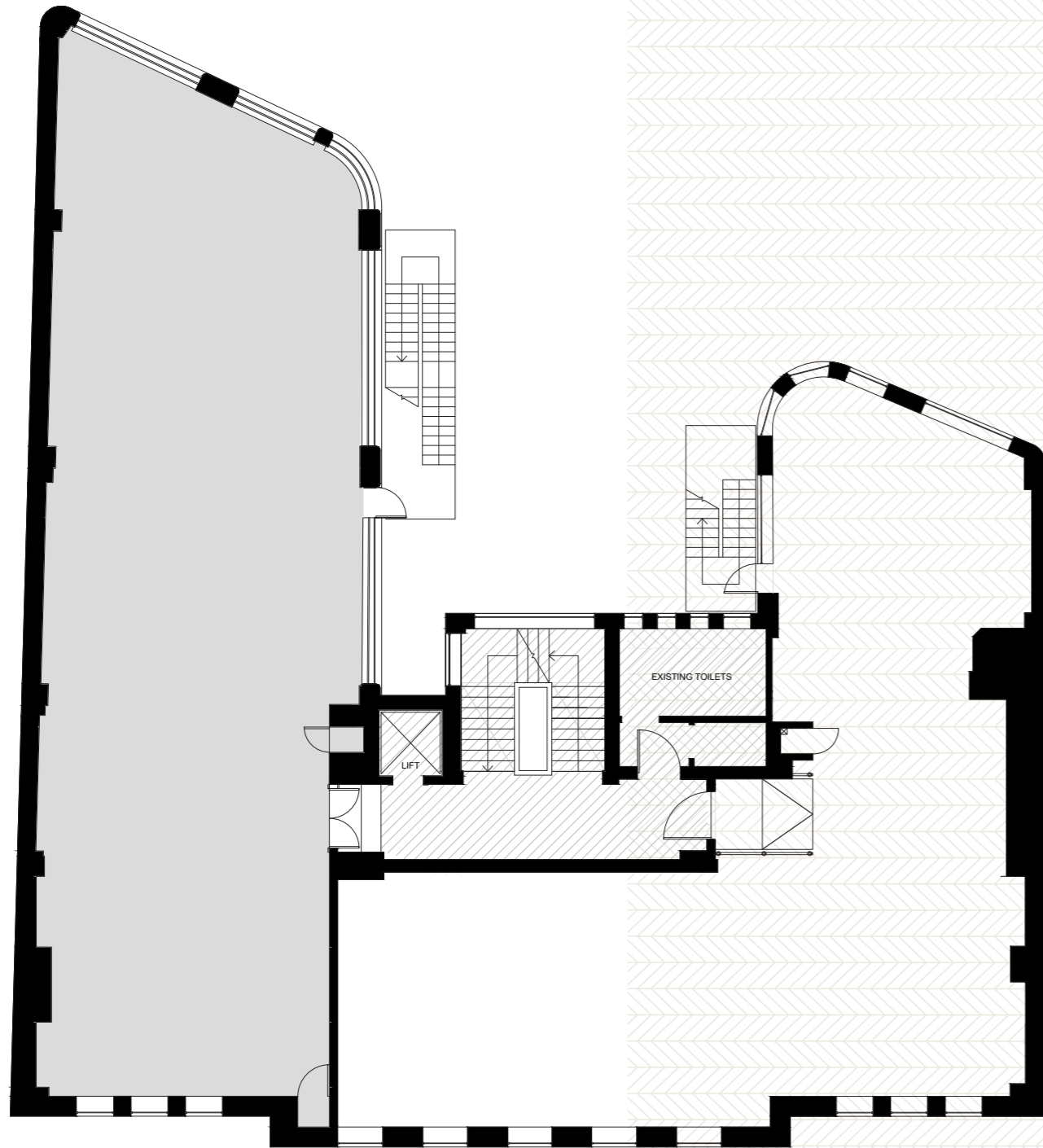
- Basement shower
- Bike store



# Second floor (Part)

1,720 SQ FT

INDICATIVE FLOORPLAN



## FEATURES & SPECIFICATION

- Raised access floor with floor boxes
- Suspended ceiling
- LED lighting
- Air conditioning
- Newly decorated throughout
- New carpets throughout
- Accessed 24 hours a day
- EPC certificate available upon request

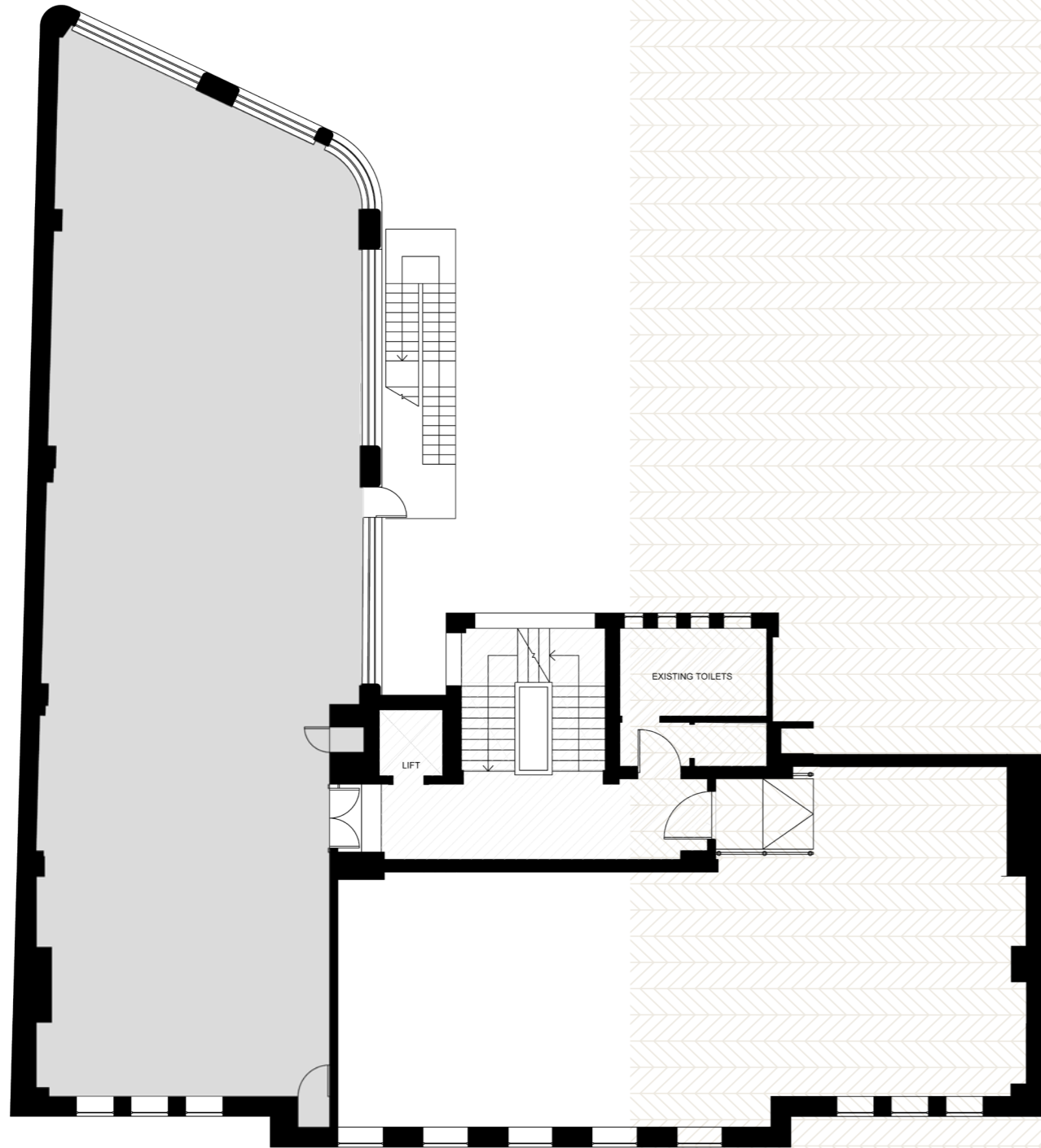
The building also includes:

- Basement shower
- Bike store

# Fourth floor (Part)

1,117 SQ FT

INDICATIVE FLOORPLAN

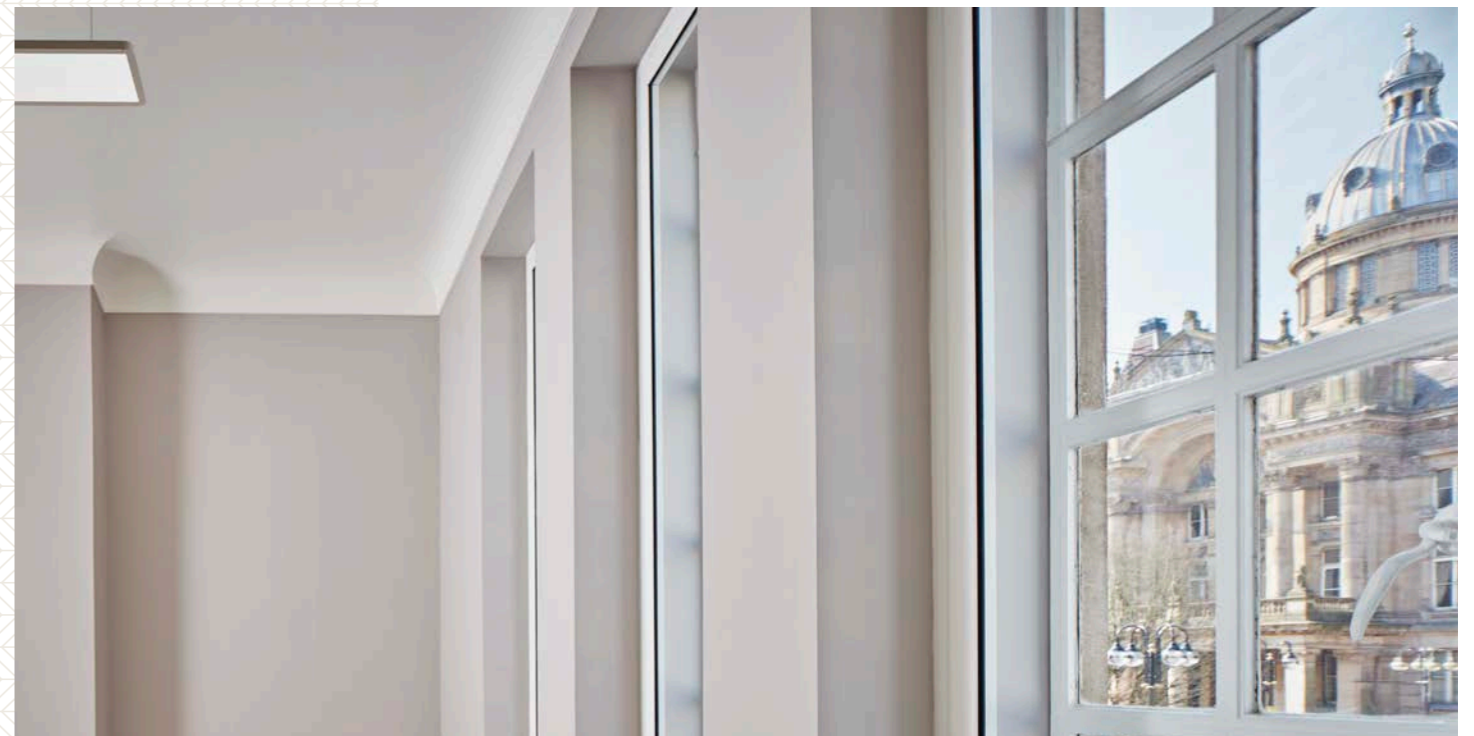


## FEATURES & SPECIFICATION

- Raised access floor with floor boxes
- Suspended ceiling
- LED lighting
- Air conditioning
- Newly decorated throughout
- New carpets throughout
- Accessed 24 hours a day
- EPC certificate available upon request

The building also includes:

- Basement shower
- Bike store





With access by road, rail and air, commuting to the city and conducting business has never been easier. The M42 and M6 can be conveniently reached with a further link to the M1 and M5 motorways. Regular bus services also operate from Colmore Row and run along the arterial routes to and from the city.

The property is within 5 minutes walk of New Street Station and within a short walk of Moor Street and Snow Hill Stations. Birmingham Airport is just 10 minutes away by train from New Street and operates services to a host of international destinations.

#### ADDRESS

16 Waterloo Street,  
Birmingham,  
West Midlands,  
B2 5UG

#### WEBSITE

[newoxford.house](http://newoxford.house)



#### CONTACT

Andrew Riach  
0121 634 6525  
[Andrew.Riach@eu.jll.com](mailto:Andrew.Riach@eu.jll.com)



#### CONTACT

Malcolm Jones  
0121 233 2330  
[mjones@kwboffice.com](mailto:mjones@kwboffice.com)

JLL and KWB for themselves and for the vendors or lessors of this property whose agents they are give notice that: (i) the particulars are set out as a general guideline only for the guidance of intending purchasers or lessees and do not constitute, nor constitute part of an offer or contract. (ii) all descriptions, dimensions, references to condition and necessary permission for use and occupation, and other details are given in good faith and are believed to be correct but any intending purchasers or tenants should not rely on them as statements or representation of fact but satisfy themselves by inspection or otherwise as to the correctness of each of them. (iii) no person in the employment of Savills and KWB has any authority to make or give any representation or warranty whatever in relation to this property. (iv) all rentals and prices are quoted exclusive of VAT. September 2021.